

## 4E BP1 RABBIT PAB

**Cat.#:** N225260

**Product Name:** Anti-4E BP1 Rabbit pAb

**Synonyms:** EIF4EBP1; Eukaryotic translation initiation factor 4E-binding protein 1; 4E-BP1; eIF4E-binding protein 1; Phosphorylated heat- and acid-stable protein regulated by insulin 1; PHAS-I

**UNIPROT ID:** Q13541

**Background:** Translation repressor protein 4E-BP1 (also known as PHAS-1) inhibits cap-dependent translation by binding to the translation initiation factor eIF4E. Hyperphosphorylation of 4E-BP1 disrupts this interaction and results in activation of cap-dependent translation. Both the PI3 kinase/Akt pathway and FRAP/mTOR kinase regulate 4E-BP1 activity.

**Immunogen:** Synthetic peptide.

**Applications:** WB,IP

**Recommended Dilutions:** WB: 1/500-1/1000 IP: 1/20

**Host Species:** Rabbit

**Clonality:** Rabbit Polyclonal

**Clone ID:** -

**MW:** Calculated MW: 13 kDa; Observed MW: 15-20 kDa

**Isotype:** IgG

**Purification:** Affinity Purified

**Species Reactivity:** Human,Mouse,Rat

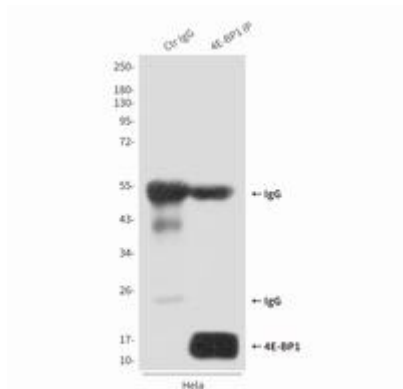
**Conjugation:** Unconjugated

**Modification:** Unmodified

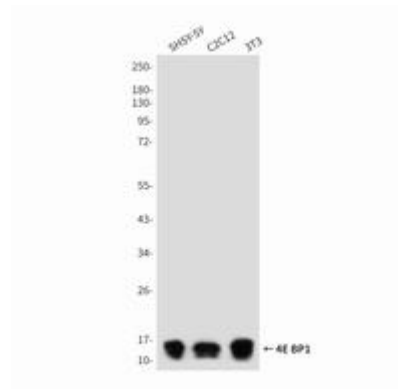
**Constituents:** PBS (without Mg<sup>2+</sup> and Ca<sup>2+</sup>), pH 7.3 containing 50% glycerol, 0.5% BSA and 0.02% sodium azide

**Research Areas:** Epigenetics and Nuclear Signaling

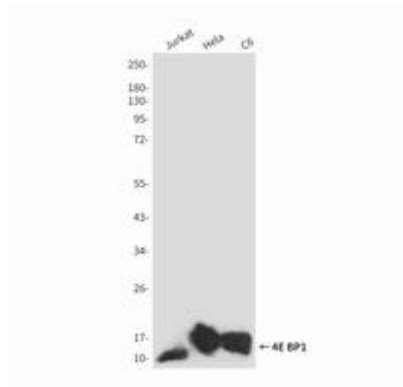
**Storage & Shipping:** Store at -20°C. Avoid repeated freezing and thawing



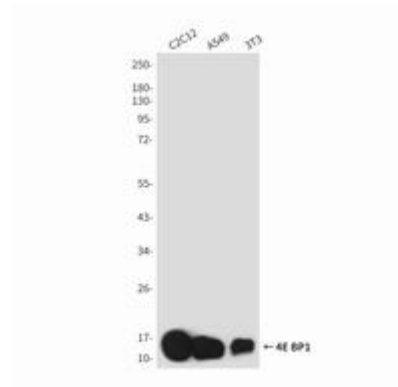
Immunoprecipitation analysis of 4E BP1 in HeLa lysates using 4E BP1 antibody.



Western blot analysis of 4E BP1 in SH-SY5Y, C2C12 and 3T3 lysates using 4E BP1 antibody.



Western blot analysis of 4E BP1 in Jurkat, HeLa and C6 lysates using 4E BP1 antibody.



Western blot analysis of 4E BP1 in C2C12, A549 and 3T3 lysates using 4E BP1 antibody.