

MESOTHELIN MAB (AMATUXIMAB)

目录: 28030

产品名称: Mesothelin (Amatuximab) Monoclonal Antibody

基因符号: MSLN; Mesothelin; MPF

描述: Mesothelin (amatuximab) Monoclonal Antibody

背景: Research grade biosimilar. Not for use in therapeutic or diagnostic procedures for humans or animals.

经过测试的应用: ELISA; Flow Cyt

推荐稀释度: ELISA 1:5000-10000; Flow Cyt 1:100

种属反应性: Chimeric

亚型: IgG1

纯化: Purified from cell culture supernatant by affinity chromatography

种属反应性: Human MSLN

成分: Lyophilized from sterile PBS, pH 7.4. 5% - 8% trehalose is added as protectants before lyophilization.

储存和运输: Store at -20°C to -80°C for 12 months in lyophilized form. After reconstitution, if not intended for use within a month, aliquot and store at -80°C (Avoid repeated freezing and thawing).

Anti-Mesothelin (amatuximab biosimilar) mAb ELISA

0.2 µg of Mesothelin(296-580), mFc-His Tagged protein per well

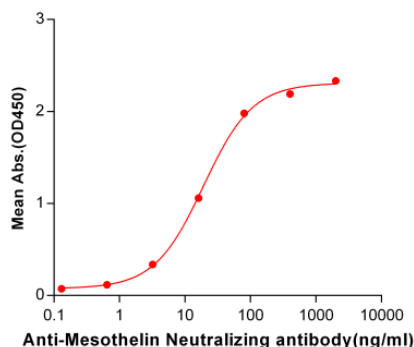


Figure 1. ELISA plate pre-coated by 2 µg/ml (100 µl/well) Human Mesothelin, mFc-His tagged protein 11159 can bind Mesothelin Neutralizing antibody in a linear range of 3.2-80.0 ng/ml.

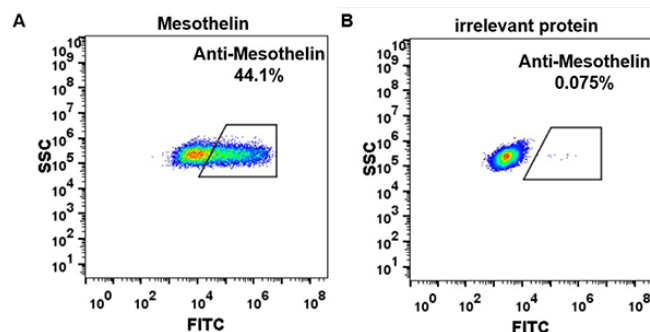


Figure 2. HEK293 cell line transfected with irrelevant protein (B) and human Mesothelin (A) were surface stained with Mesothelin neutralizing antibody 1 µg/ml (amatuximab) followed by Alexa 488-conjugated human IgG secondary antibody.