

ALBUMIN PAB**Albumin Polyclonal Antibody**

货号: 21112

基因符号: Albumin

描述: Albumin Rabbit Polyclonal Antibody

背景: Serum albumin is the most abundant blood plasma protein in mammals. Albumin is essential for maintaining the osmotic pressure needed for proper distribution of body fluids between intravascular compartments and body tissues. It also acts as a plasma carrier by non-specifically binding several hydrophobic steroid hormones and as a transport protein for hemin and fatty acids. Too much serum albumin in the body can be harmful.

免疫原: A synthetic peptide from the N-terminal region of human Albumin protein

经过测试的应用: ELISA, WB, IHC, IP

推荐稀释度:

ELISA: 1:100-1:5000

WB: 1:100-1:1000

IHC: 1:100-1:1000

浓度: 0.2 mg/ml

种属反应性: Rabbit

形式: Liquid

克隆性: Polyclonal

亚型: IgG

纯化: Purified from serum

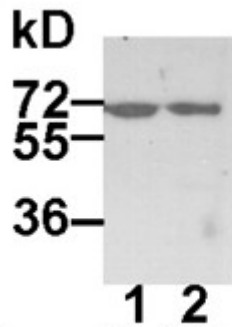
Preservative: No

成分: PBS (without Mg^{2+} and Ca^{2+}), pH 7.4, 150 mM NaCl, 50% glycerol Species

种属反应性: Albumin antibody recognizes Albumin proteins from mammals.

储存条件: Store at $-20^{\circ}C$. Avoid repeated freezing and thawing

Western blot:



WB: anti-Albumin pAb

HEK-293T (lane 1) and MEF (lane 2) whole-cell lysates were used for Western blot with Albumin polyclonal antibody (cat # 21112).