

ALBUMIN MAB

Albumin Monoclonal Antibody

货号: 26090

基因符号: ALB

描述: Albumin 小鼠单克隆抗体

背景: Albumin belongs to the ALB/AFP/VDB family. It comprises about one-half of the blood serum protein. Albumin functions primarily as a carrier protein for steroids, fatty acids, and thyroid hormones, and also plays a role in stabilizing extracellular fluid volume. Defects in Albumin will cause familial dysalbuminemic hyperthyroxinemia (FDH).

免疫原: Albumin protein, human origin.

经过测试的应用: ELISA, WB, IHC

推荐稀释度:

ELISA: 1:1000-1:5000

WB: 1:1000-1:5000

IHC: 1:50-1:100

浓度: 1 mg/ml

种属反应性: Mouse

形式: Liquid

克隆性: Monoclonal

亚型: IgG

纯化: Purified from ascites

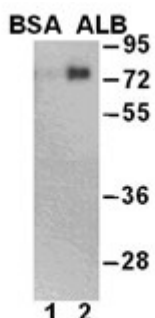
Preservative: No

成分: PBS (without Mg^{2+} and Ca^{2+}), pH 7.4, 150 mM NaCl, 50% glycerol

种属反应性: Albumin antibody recognizes Albumin from vertebrates.

储存条件: Store at $-20^{\circ}C$. Avoid repeated freezing and thawing.

Western blot:

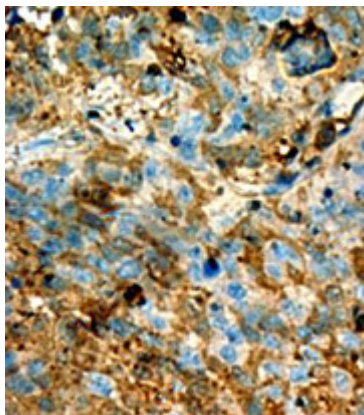


WB: Anti-Albumin mAb

Western blot analysis of Albumin(HSA) and BSA proteins.

Purified Albumin protein (lane 2) were blotted with anti Albumin monoclonal antibody (货号 26090). BSA protein was loaded as a control (lane 1).

Immunohistochemistry:



Immunohistochemical analysis of paraffin-embedded liver cancer tissue with anti Albumin monoclonal antibody (货号26090). Tissue samples were fixed with formaldehyde and blocked with 1% serum for 15 min at 37 °C. Antigen retrieval was by heat mediation in citrate buffer (pH6). Samples were then incubated with primary antibody (1:50) overnight at 4°C. A HRP-conjugated Goat mouse IgG (dilution 1:50) was used as secondary antibody.