

## AFP (DMC281) IGG1 CHIMERIC MAB

目录: 28189

产品名称: AFP(DMC281) IgG1 Chimeric Monoclonal Antibody

基因符号: AFPD; FETA; HPAFP

描述: AFP antibody(DMC281) IgG1 Chimeric Monoclonal Antibody

背景: This gene encodes alpha-fetoprotein; a major plasma protein produced by the yolk sac and the liver during fetal life. Alpha-fetoprotein expression in adults is often associated with hepatocarcinoma and with teratoma; and has prognostic value for managing advanced gastric cancer. However; hereditary persistence of alpha-fetoprotein may also be found in individuals with no obvious pathology. The protein is thought to be the fetal counterpart of serum albumin; and the alpha-fetoprotein and albumin genes are present in tandem in the same transcriptional orientation on chromosome 4. Alpha-fetoprotein is found in monomeric as well as dimeric and trimeric forms; and binds copper; nickel; fatty acids and bilirubin. The level of alpha-fetoprotein in amniotic fluid is used to measure renal loss of protein to screen for spina bifida and anencephaly.

经过测试的应用: Flow Cyt

推荐稀释度: Flow Cyt 1:100

种属反应性: Rabbit

亚型: Rabbit:Human Fc chimeric IgG1

纯化: Purified from cell culture supernatant by affinity chromatography

种属反应性: Human AFP

成分: Lyophilized from sterile PBS, pH 7.4. 5 % – 8% trehalose is added as protectants before lyophilization.

储存和运输: Store at -20°C to -80°C for 12 months in lyophilized form.

After reconstitution, if not intended for use within a month, aliquot and store at -80°C (Avoid repeated freezing and thawing).

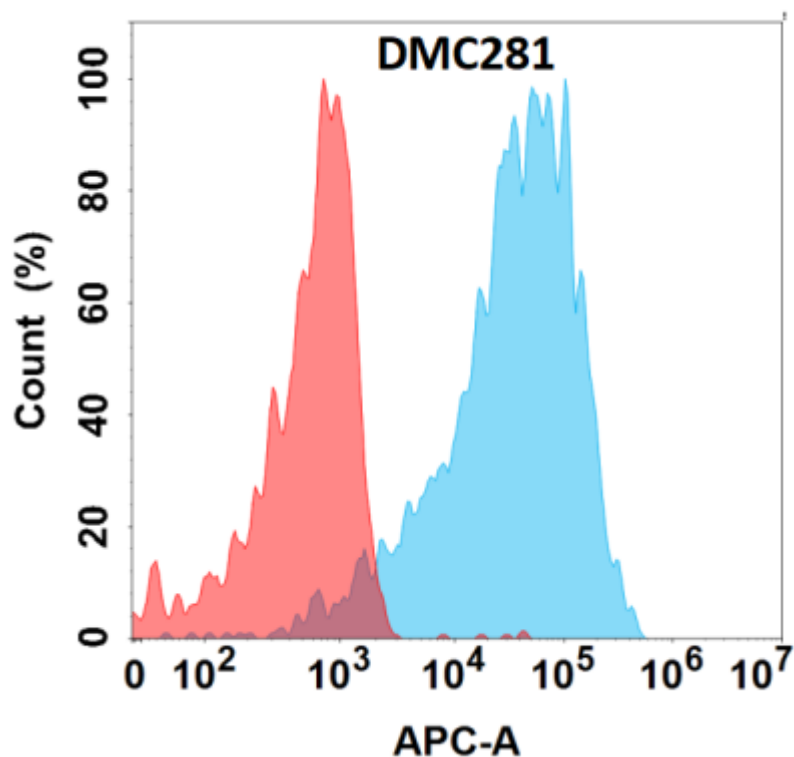


Figure 1. Flow cytometry analysis with AFP (DMC281) on Expi293 cells transfected with human AFP (Blue histogram) or Expi293 transfected with irrelevant protein (Red histogram).