

## ADGRE1 (DMC481) IGG1 CHIMERIC MAB

**Cat.#:** 28257

**Product Name:** Anti-ADGRE1(DMC481) IgG1 Chimeric Monoclonal Antibody

**Synonyms:** EMRI; TM7LN3

**Description:** Anti-ADGRE1 antibody(DMC481) IgG1 Chimeric Monoclonal Antibody

**Background:** This gene encodes a protein that has a domain resembling seven transmembrane G protein-coupled hormone receptors (7TM receptors) at its C-terminus. The N-terminus of the encoded protein has six EGF-like modules; separated from the transmembrane segments by a serine:threonine-rich domain; a feature reminiscent of mucin-like; single-span; integral membrane glycoproteins with adhesive properties. Multiple alternatively spliced transcript variants encoding different isoforms have been found for this gene. [provided by RefSeq; Jan 2012]

**Applications:** Flow Cyt

**Recommended Dilutions:** Flow Cyt 1:100

**Host Species:** Rabbit

**Isotype:** Rabbit:Human Fc chimeric IgG1

**Purification:** Purified from cell culture supernatant by affinity chromatography

**Species Reactivity:** Human ADGRE1

**Constituents:** Lyophilized from sterile PBS, pH 7.4. 5 % – 8% trehalose is added as protectants before lyophilization.

**Storage & Shipping:** Store at -20°C to -80°C for 12 months in lyophilized form. After reconstitution, if not intended for use within a month, aliquot and store at -80°C (Avoid repeated freezing and thawing).

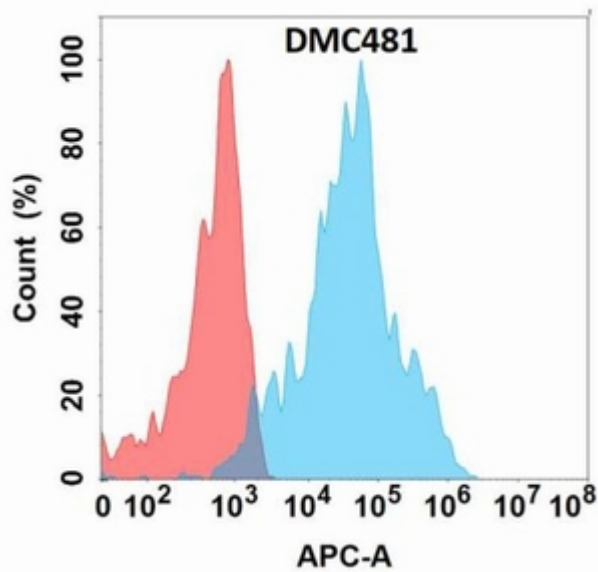


Figure 1. Flow cytometry analysis with Anti-ADGRE1 (DMC481) on Expi293 cells transfected with human ADGRE1 (Blue histogram) or Expi293 transfected with irrelevant protein (Red histogram).