

## B-ACTIN PAB

### $\beta$ -Actin Polyclonal Antibody

**Cat. #:** 21011

**Gene Symbol:** ACTB

**Description:** Anti- $\beta$ -actin Rabbit Polyclonal Antibody

**Background:** Actin is expressed in all eukaryotic cells and is the major component of the cytoskeleton. At least six types of actin are present in mammalian tissues and fall into three classes.  $\beta$ -actin expression is limited to various types of muscle and it regulates contractile potentials for the muscle cells, whereas  $\beta$  and  $\gamma$  actins, also known as cytoplasmic actins, are predominantly expressed in nonmuscle cells, controlling cell structure and motility.

**Immunogen:** Synthetic peptide from the N-terminal of  $\beta$ -actin

**Applications:** ELISA, WB, IHC

**Recommended Dilutions:**

ELISA 1:1000–1:5000

WB 1:100–1:2000

IHC 1:50–1:100

**Concentration:** 0.2 mg/ml

**Host Species:** Rabbit

**Format:** Liquid

**Clonality:** Polyclonal

**Purity:** Purified from serum

**Preservative:** No

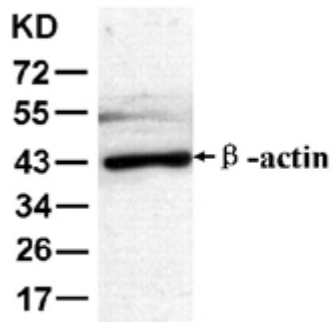
**Constituents:** PBS (without  $Mg^{2+}$  and  $Ca^{2+}$ ), pH 7.4, 150 mM NaCl, 50% glycerol

**Species Reactivity:** Anti- $\beta$  actin antibody recognizes  $\beta$ -actin of vertebrates and invertebrates

**Storage Conditions:** Store at  $-20^{\circ}C$ . Avoid repeated freezing and thawing

## Western blot:

HEK-293T



WB: anti- $\beta$ -actin pAb

HEK-293T whole-cell lysate was used for western blot with Anti- $\beta$  actin polyclonal antibody (cat # 21011).