

ACE2 (DM48) RABBIT MAB

目录: 28342

产品名称: ACE2(DM48) Rabbit Monoclonal Antibody

基因符号: ACE-2; ACEH; ACE2

描述: ACE2 antibody(DM48) Rabbit Monoclonal Antibody

背景: The protein encoded by this gene belongs to the angiotensin-converting enzyme family of dipeptidyl carboxydipeptidases and has considerable homology to human angiotensin I converting enzyme. This secreted protein catalyzes the cleavage of angiotensin I into angiotensin 1-9; and angiotensin II into the vasodilator angiotensin 1-7. The organ- and cell-specific expression of this gene suggests that it may play a role in the regulation of cardiovascular and renal function; as well as fertility. In addition; the encoded protein is a functional receptor for the spike glycoprotein of the human coronaviruses SARS and HCoV-NL63.

经过测试的应用: ELISA; Flow Cyt

推荐稀释度: ELISA 1:5000-10000; Flow Cyt 1:100

种属反应性: Rabbit

亚型: Rabbit IgG

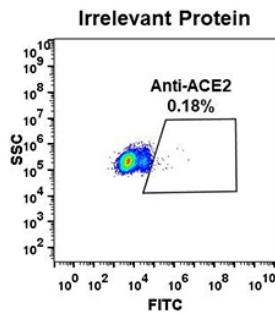
纯化: Purified from cell culture supernatant by affinity chromatography

种属反应性: Human ACE2

成分: Lyophilized from sterile PBS, pH 7.4. 5 % - 8% trehalose is added as protectants before lyophilization.

储存和运输: Store at -20°C to -80°C for 12 months in lyophilized form. After reconstitution, if not intended for use within a month, aliquot and store at -80°C (Avoid repeated freezing and thawing).

A



B

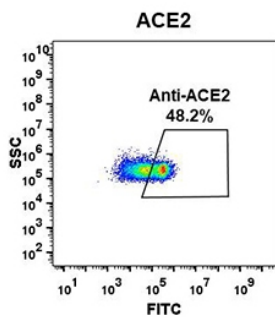


Figure 1. Expi 293 cell line transfected with irrelevant protein (left) and human ACE2 (right) were surface stained with Rabbit ACE2 monoclonal antibody 1 μ g/ml (clone: DM48) followed by Alexa 488-conjugated rabbit IgG secondary antibody.

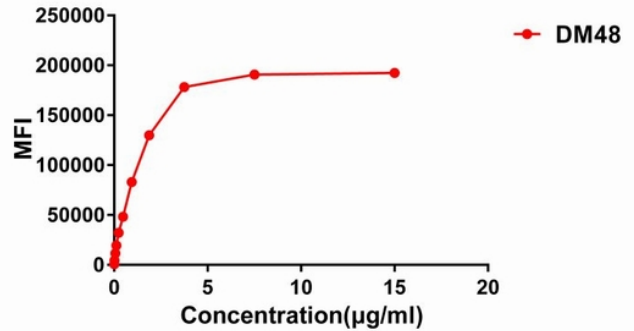


Figure 2. Flow cytometry data of serially titrated Rabbit ACE2 monoclonal antibody (clone: DM48) on Expi 293 cell line transfected with human ACE2. The Y-axis represents the mean fluorescence intensity (MFI) while the X-axis represents the concentration of IgG used.

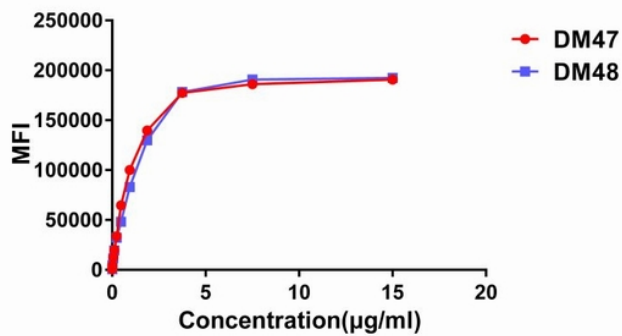


Figure 3. Affinity ranking of different Rabbit ACE2 mAb clones by titration of different concentration onto Expi 293 cell line transfected with human ACE2. The Y-axis represents the mean fluorescence intensity (MFI) while the X-axis represents the concentration of IgG used.