

## 5T4 (DM137) RABBIT MAB

目录: 28482

产品名称: 5T4(DM137) Rabbit Monoclonal Antibody

基因符号: 5T4

描述: 5T4 antibody(DM137) Rabbit Monoclonal Antibody

背景: This gene encodes a leucine-rich transmembrane glycoprotein that may be involved in cell adhesion. The encoded protein is an oncofetal antigen that is specific to trophoblast cells. In adults this protein is highly expressed in many tumor cells and is associated with poor clinical outcome in numerous cancers. Alternate splicing in the 5' UTR results in multiple transcript variants that encode the same protein.

经过测试的应用: ELISA; Flow Cyt

推荐稀释度: ELISA 1:5000-10000; Flow Cyt 1:100

种属反应性: Rabbit

亚型: Rabbit IgG

纯化: Purified from cell culture supernatant by affinity chromatography

种属反应性: Human 5T4

成分: Lyophilized from sterile PBS, pH 7.4. 5 % – 8 % trehalose is added as protectants before lyophilization.

储存和运输: Store at  $-20^{\circ}\text{C}$  to  $-80^{\circ}\text{C}$  for 12 months in lyophilized form. After reconstitution, if not intended for use within a month, aliquot and store at  $-80^{\circ}\text{C}$  (Avoid repeated freezing and thawing).

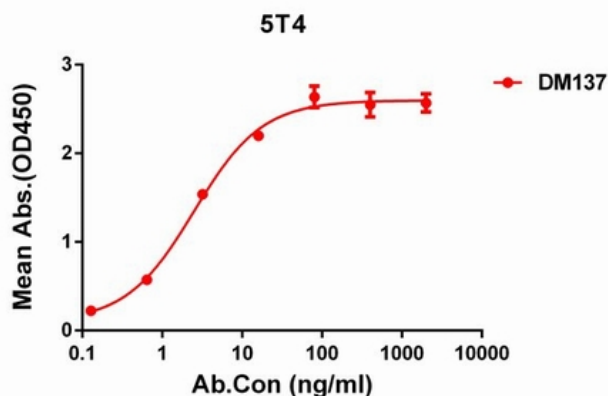


Figure 1. ELISA plate pre-coated by 1  $\mu\text{g}/\text{ml}$  (100  $\mu\text{l}/\text{well}$ ) Human 5T4 protein, His tagged protein 11232 can bind Rabbit 5T4 monoclonal antibody (clone: DM137) in a linear range of 0.1-16 ng/ml.

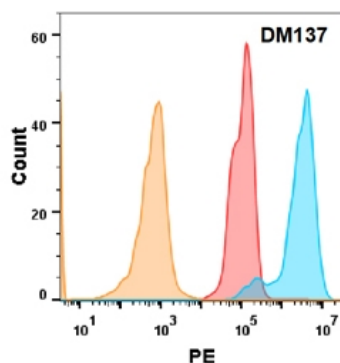


Figure 2. 5T4 protein is highly expressed on the surface of Expi293 cell membrane. Flow cytometry analysis with 5T4 (DM137) on Expi293 cells transfected with human 5T4 (Blue histogram) or Expi293 transfected with irrelevant protein (Red histogram), and Isotype antibody on Expi293 transfected with irrelevant protein (Orange histogram)