

## 2B4 (DM70) RABBIT MAB

**Cat.#:** 28381

**Product Name:** Anti-2B4(DM70) Rabbit Monoclonal Antibody

**Synonyms:** CD244;2B4;SLAMF4;NKR2B4;NAIL;h2B4

**Description:** Anti-2B4 antibody(DM70) Rabbit Monoclonal Antibody

**Background:** This gene encodes a cell surface receptor expressed on natural killer (NK) cells (and some T cells) that mediate non-major histocompatibility complex (MHC) restricted killing. The interaction between NK-cell and target cells via this receptor is thought to modulate NK-cell cytolytic activity. Alternatively spliced transcript variants encoding different isoforms have been found for this gene.

**Applications:** ELISA; Flow Cyt

**Recommended Dilutions:** ELISA 1:5000-10000; Flow Cyt 1:100

**Host Species:** Rabbit

**Isotype:** Rabbit IgG

**Purification:** Purified from cell culture supernatant by affinity chromatography

**Species Reactivity:** Human 2B4

**Constituents:** Lyophilized from sterile PBS, pH 7.4. 5% - 8% trehalose is added as protectants before lyophilization.

**Storage & Shipping:** Store at -20°C to -80°C for 12 months in lyophilized form. After reconstitution, if not intended for use within a month, aliquot and store at -80°C (Avoid repeated freezing and thawing).

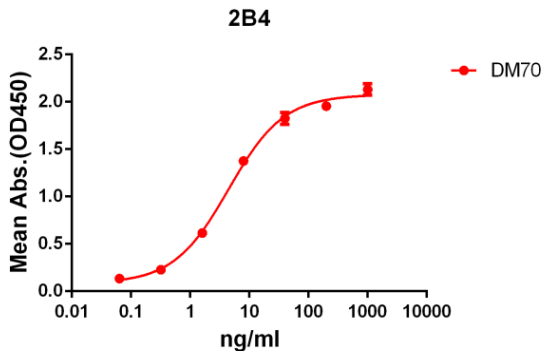


Figure 1. ELISA plate pre-coated by 2 µg/ml (100 µl/well) Human 2B4 protein, mFc-His tagged protein 11138][getskuurl sku=)] can bind Rabbit anti-2B4 monoclonal antibody ( clone: DM70) in a linear range of 1-100 ng/ml.

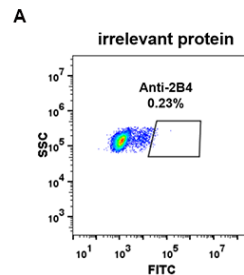


Figure 2. Expi 293 cell line transfected with irrelevant protein (A) and human 2B4 (B) were surface stained with Rabbit anti-2B4 monoclonal antibody 1µg/ml ( clone: DM70) followed by Alexa 488-conjugated anti-rabbit IgG secondary antibody.

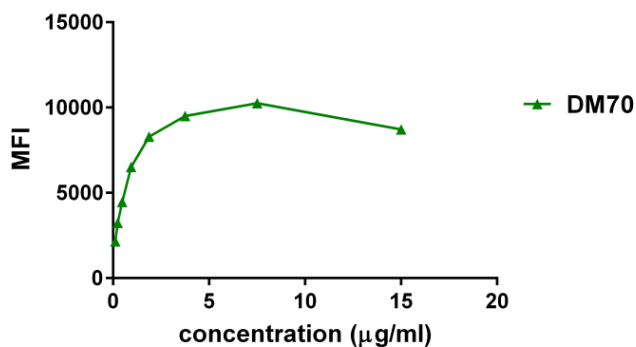


Figure 3. Flow cytometry data of serially titrated Rabbit anti-2B4 monoclonal antibody ( clone: DM70) on THP-1 cells. The Y-axis represents the mean fluorescence intensity (MFI) while the X-axis represents the concentration of IgG used.

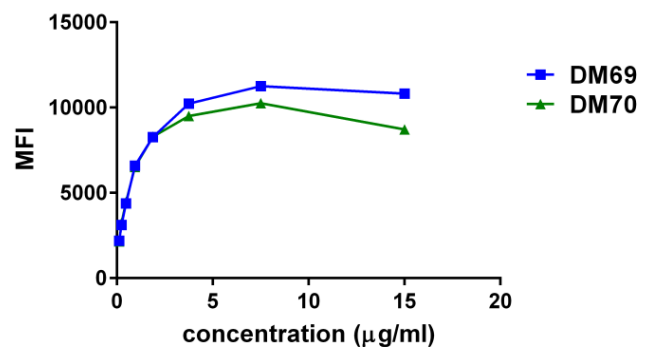


Figure 4. Affinity ranking of different Rabbit anti-2B4 mAb clones by titration of different concentration onto THP-1 cells. The Y-axis represents the mean fluorescence intensity (MFI) while the X-axis represents the concentration of IgG used.